

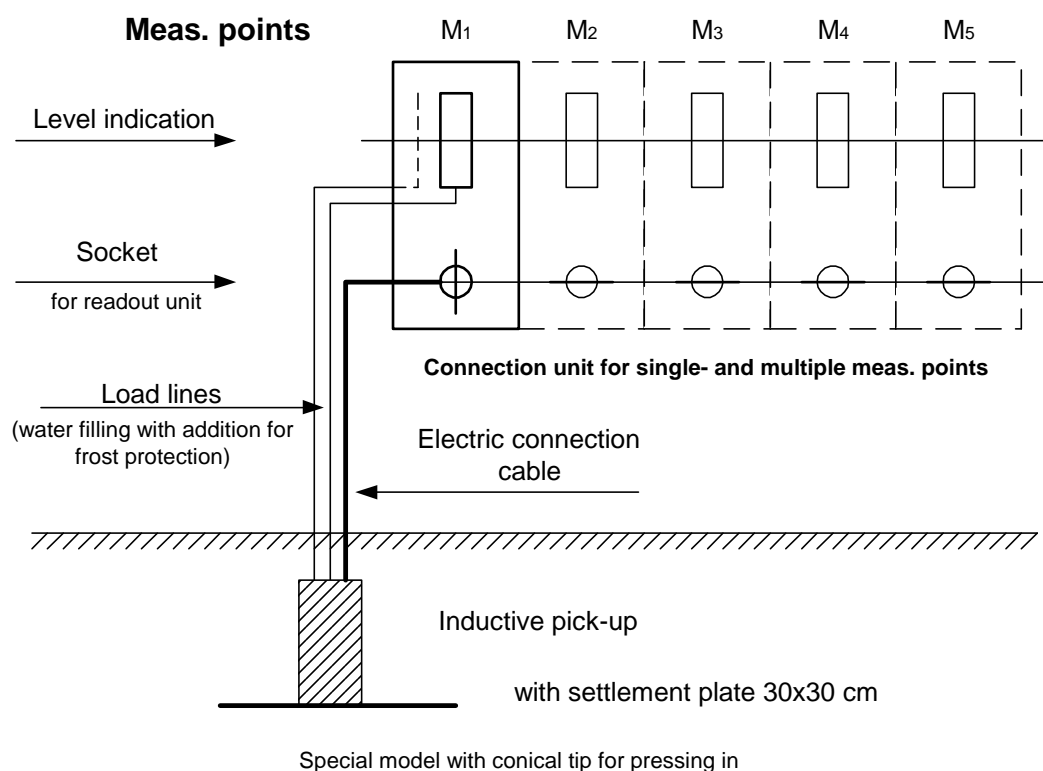
GLÖTZL Baumeßtechnik

ELECTRIC SETTLEMENT TRANSDUCER

Type: ETAU
Art. No.: 69.50

The electric settlement transducer consists of a relative pressure transducer which is loaded by a plastic duplicate line with a liquid medium. These load lines are constructed as ring circuit for subsequent filling.

By arising settlements, this liquid pressure (difference between central and transducer) changes and is recorded by measurement techniques.



Models:

ET xx 30/30 zz Electric settlement transducer with settlement plate, for installation in backfills

ET xx Ø6 zz Electric settlement transducer with conical tip, Ø 6 cm, for pressing in

ET xx 30/30 zz

Measuring range 0–6 / 10 / 20 m

Model with settlement plate / with conical tip (see above)

Type of the pressure sensor AU / AI / VW (see reverse)

Electric settlement transducer

Types:**ETAU yy zz** Pressure sensor piezoelectric, 4-wire system**Technical data:**

Supply: 1 mA / 4 mA /10 V DC
 Output signal: 0 - 1000 mV
 Overload security 1-200 bars: 50 % f.s.
 Linearity incl. hysteresis: ≤ 0.5 % f.s.
 Thermal zero point drift: 0.1 mV/K

Connections:

+ Supply black (1)
 - Supply yellow (2)
 + Output red (3)
 - Output blue (4)
 Screening yellow/green
 Resonance > 30 kHz
 Meas. frequency 1 kHz

ETAI xx yy Pressure sensor piezoelectric as above, with installed amplifier and temperature sensor

Supply: 24 V DC
 Output signal: 4 - 20 mA
 2-wire system

Temperature sensor AD 590:
 Output signal: 1 μ A/K

ETVW xx yy Vibrating wire sensor, operating frequency from 2000 Hz up to 3300 Hz
Thermistor type BR55, $T_{25} = 3000$ Ohm**Measuring ranges:**

Transd.meas.range	Water column	Accuracy	Type designation
0 up to 0.6 bar	6 m	+ / -10 mm	ETAU 30/30 K0.6 ETAU 6 K0,6
0 up to 1.0 bar	10 m	+ / -15 mm	ETAU 30/30 K1 ETAU 6 K1
0 up to 2.0 bars	20 m	+ / -50 mm	ETAU 30/30 K2 ETAU 6 K2

Recording:

- Battery operated readout units
- Intermediate amplifier for remote control
- Manually operatable change-over manifolds
- Automatic measuring- and recording stations with data carrier resp. memory

**Readout unit FMG 01-2****Further models on request**

GLÖTZEL Gesellschaft für Baumeßtechnik mbH · Forlenweg 11 · 76287 Rheinstetten · Germany

☎ +49 (0)721 51 66 - 0 · 📠 +49 (0)721 51 66 - 30 · 🌐 <http://www.gloetzel.com> · ✉ info@gloetzel.com