

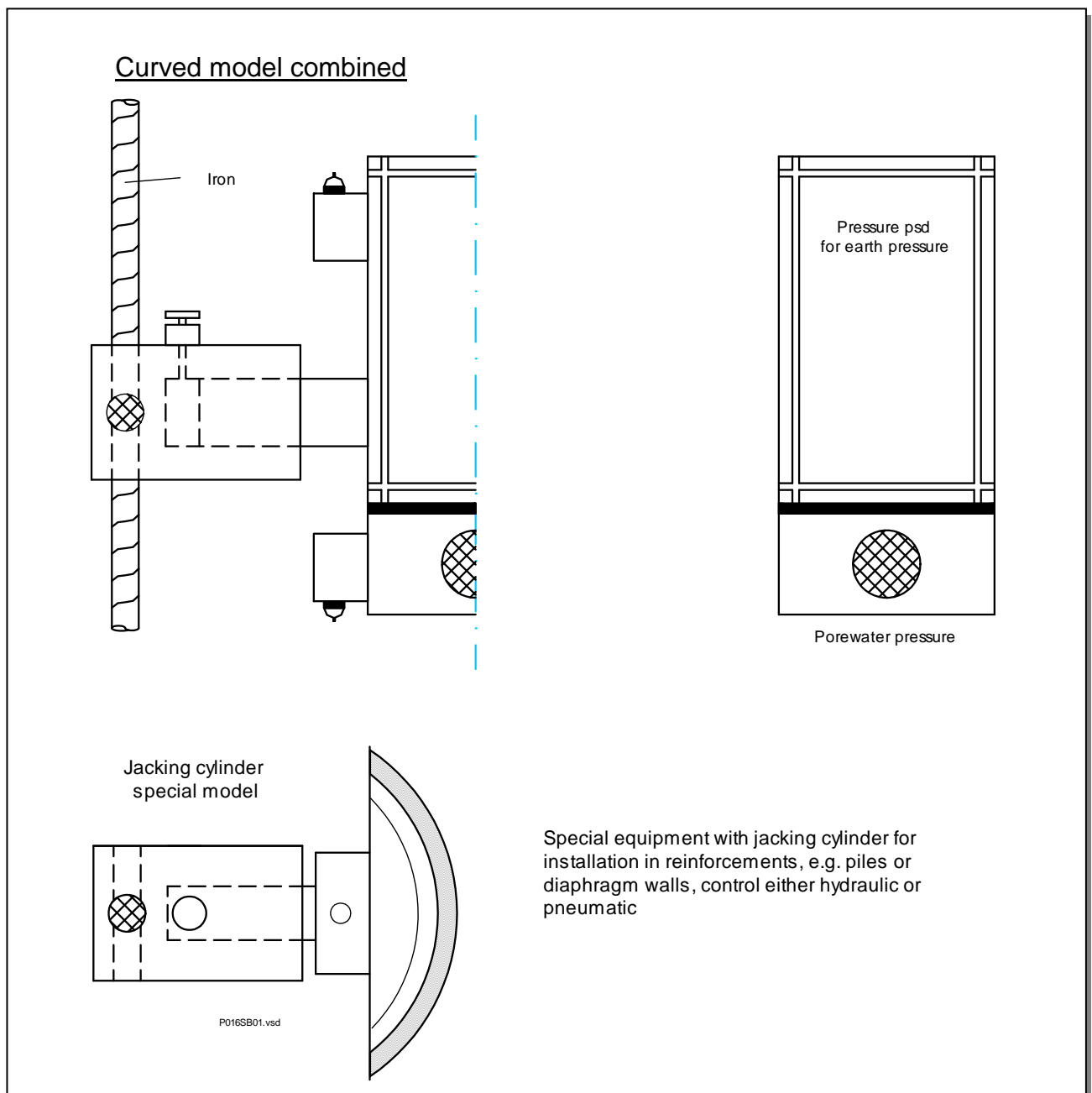
GLÖTZL Baumeßtechnik

SHUTTERING PRESSURE TRANSDUCER for EARTH PRESSURE and combined with POREWATER PRESSURE hydraulic/electric

Type: S . . .

Art. No.: 07. 05

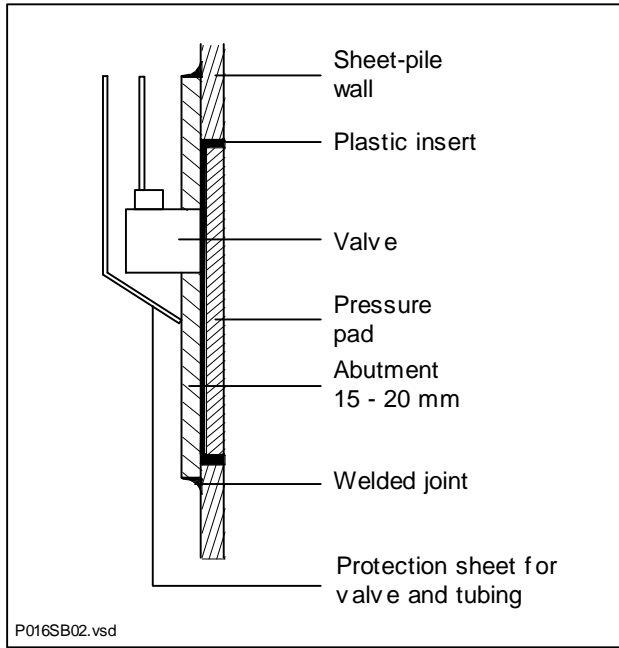
The shuttering pressure transducer for earth pressure and also combined for porewater pressure is available with flat and curved pressure pad with radii adjusted to the respective construction. Two pressure pad sizes are available which can be equipped with the approved hydraulic/pneumatic compensation valve or with electric pressure transducers.



The figure only shows one execution possibility. For the respective application, specially constructed instruments are available. For installation of pressure pads in piles or also in sheet-pile walls, we generally recommend cells with compensation valve on account of its approved robust construction.

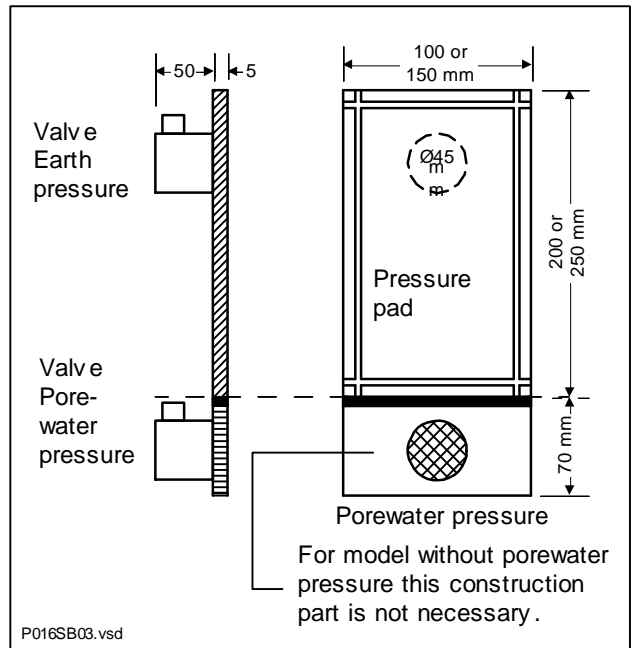
Flat model – earth pressure

Installation example sheet-pile wall



Combined earth pressure – porewater pressure

Cell model



Models:	S(SP)	10/20	R...(P)	K5	VHD
	S = Shuttering pres.	Pressure pad dimensions	R = Radius in [mm]	Load	Meas. type
	SP = Combined with porewater pres.	100/200 mm 150/200 mm	F = flat P = Jacking cylinder	2/5/10 20 und 50 bar	

Press. recording: Measurement type:

Hydraulic/pneumatic compensation valve	VHD
Pressure transformer piezoelectric without electronics	AU
Pressure transformer piezoelectric with amplifier 4 - 20 mA	AI
Pressure transformer with vibrating wire transducer	VW

Material:

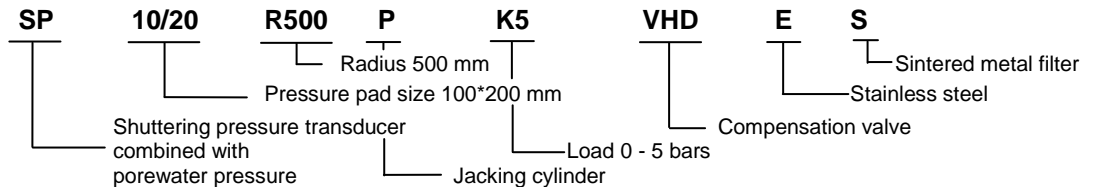
F (E)

F = Steel St37
E = Stainless steel

K(S)

Combined model
K = Ceramic filter
S = Sintered metal filter

Order example:



Technical data – models	VHD	AU	AI	VW
Meas. accuracy f.s.	+/- 0.2 %	+/- 0.5 %	+/- 0.5 %	+/- 0.5 %
Temperature error f.s.	< 0.05 %/°C	< 0.1 %/°C	< 0.1 %/°C	< 0.1 %/°C
Application range	-30 up to +70 °C	-20 up to +60 °C	-5 up to +60 °C	-20 up to +60 °C
Temperature sensor	no	no	AD 590	Thermistor
Supply	pneumatic	1 mA/ 4 mA / 10 V DC	15 – 30 V DC, 2-conductor	VW, 4-conductor
Output signal	[bar]	0 - max. 1000 mV	4 - 20 mA	f ²